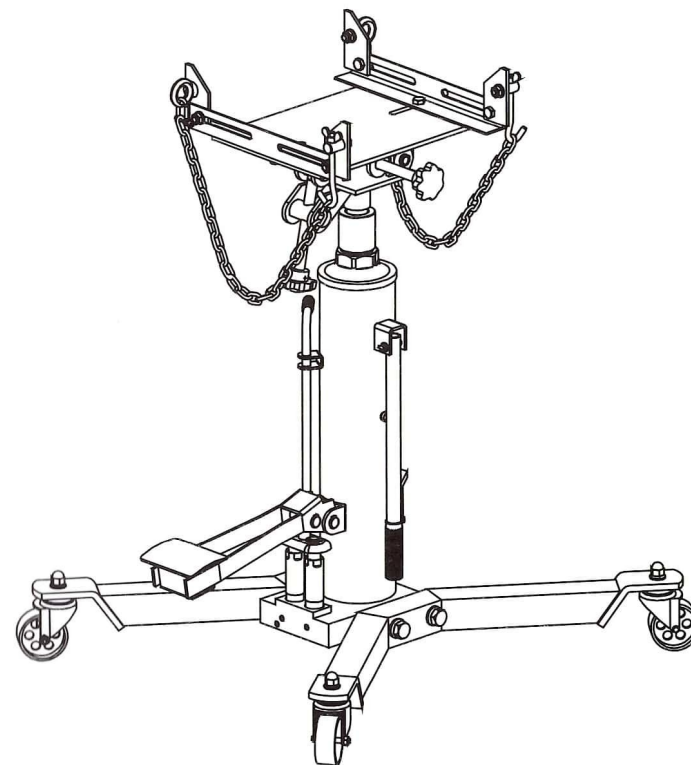


OWNER'S MANUAL

PENUMATIC TRANSMISSION JACK



Caution:

Before use, Always read Instructions and Procedures carefully for safe operation.

MADE IN CHINA

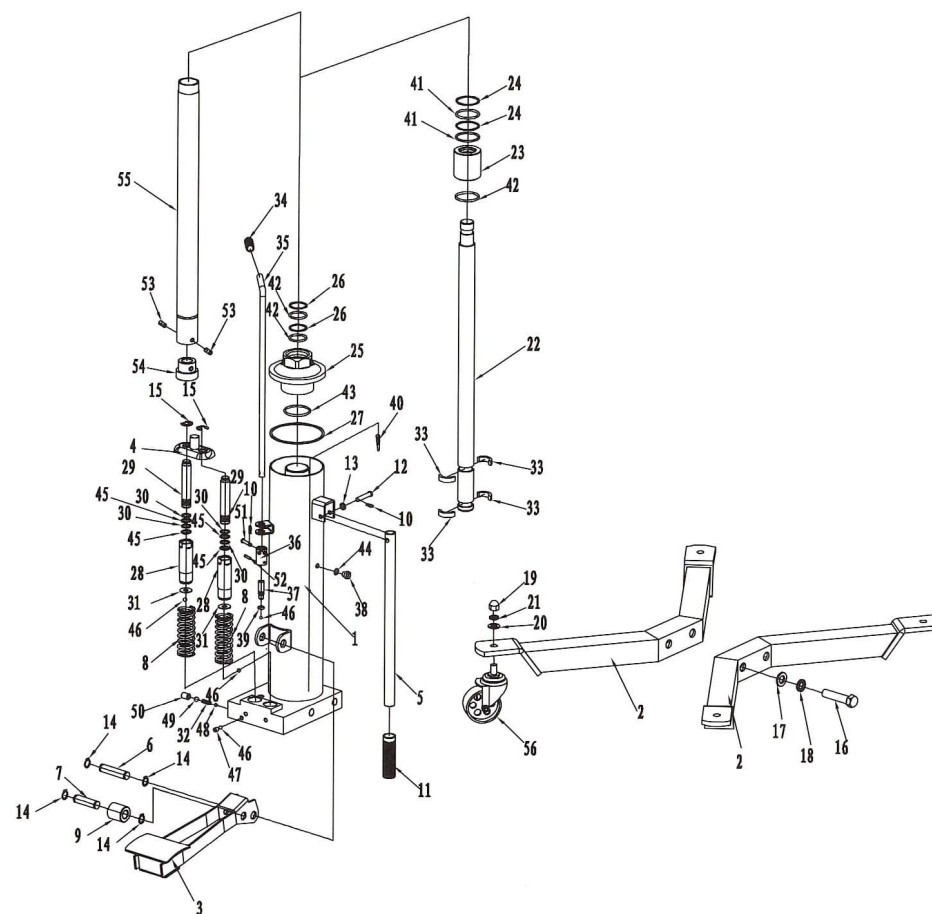
WARNING!

1. The use of this jack is limited to the removal Installation. And transportation in the lowest position of transmissions and differentials. It may be used with appropriate adaptors manufactured especially for the jack to handle other components; such as rear axle units and transfer case, within the weight limitations specified.
2. Be sure that the jack is appropriately supported before starting repairs.
3. Do not overloading can cause damage to or failure of the jack.
4. This jack is designed for use only on hard level surfaces capable of sustaining the load. Use on other than hard level surfaces can result in jack instability and possible loss of load.
5. Failure to heed these warnings may result in loss of load. Damage to jack and/or failure resulting in personal or property damage.

MAINTENANCE

- The hydraulic system is a closed system and will normally demand no maintenance.
- The mechanical parts of the pedal must be frequently lubricated with a high-quality oil.
- The oil level must not come up over the filling plug, when the transmission jack is in its lowest position.
- When the lifting saddle can be pumped up to the top position the hydraulic system is filled with enough oil.

EXPLODED DRAWING



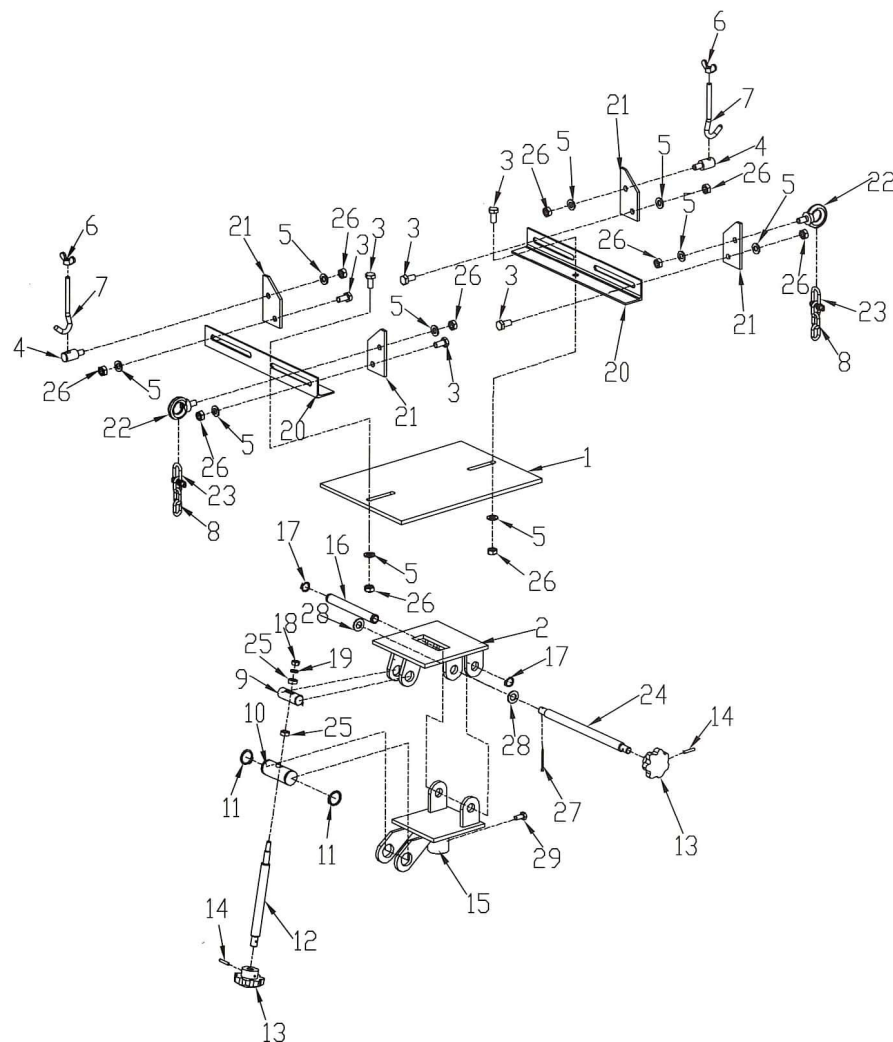
PARTS LIST

No.	Description	QTY	No.	Description	QTY
1	Cylinder seat	1	18	Spring pad 16	4
2	Supporting leg	2	19	Cap nut M12	4
3	Foot	1	20	Flat washer 12	4
4	Pressure plate spring	1	21	Spring pad 12	4
5	Handle	1	22	Piston rod	4
6	Pin shaft	1	23	Small cap	1
7	Pin shaft	1	24	Retaining ring	4
8	Spring	2	25	Big top hat	4
9	Roller	1	26	Retaining ring	2
10	Bolt	2	27	Flat washer	1
11	Handle sleeve	1	28	Pump body	2
12	Pin shaft 8X42	1	29	The pump core	2
13	Flat washer 8	1	30	pump core ring	4
14	Retaining ring 16	4	31	Pump body gasket	2
15	Retaining ring 12	2	32	Spring	1
16	Bolt M16X70	4	33	Guide ring	4
17	Flat washer 16	4	34	Small handle sleeve	1
			35	Oil return valve control lever	1

PARTS LIST

No.	Description	QTY
36	Connecting sleeve	1
37	Oil return valve	1
38	Screw	1
39	O ring 7.7X1.9	1
40	Oil strainer	2
41	O ring 31.5X3.55	2
42	O ring 42.5X3.55	3
43	O ring 50X5.3	1
44	O ring 8.5X2.65	1
45	O ring 14X2.65	4
46	Steel ball 6	8
47	Nut	5
48	Steel ball 7.2	1
49	Steel ball 10	1
50	Screw M12X16	1
51	Pin shaft 6X28	1
52	Cylindrical pin 4X20	1
53	Cylindrical pin 8X20	2
54	Piston head	1
55	Piston cylinder	1
56	Universal wheel	4

EXPLODED DRAWING



PARTS LIST

No.	Description	QTY
1	Upper bracket	1
2	Taiwan panel	1
3	Bolt M10X20	6
4	Hook block	2
5	Shim 10	10
6	Butterfly nut M8	2
7	Hook	2
8	Chain	2
9	Short axis	1
10	Central axis	1
11	Retaining ring 25	2
12	Screw	1
13	Plastic handle	2
14	Elastic pin 3X30	2
15	lower bracket	1

No.	Description	QTY
16	axis	1
17	Retaining ring 16	2
18	nut M8	1
19	Shim 8	1
20	Side plate	2
21	Angle plate	4
22	Lifting eye nuts M10	2
23	Shackle	2
24	Long screw	1
25	Axle sleeve	2
26	nut M10	10
27	Cotter pin 2.5X24	1
28	Shim 14	2
29	Bolt M8X15	1