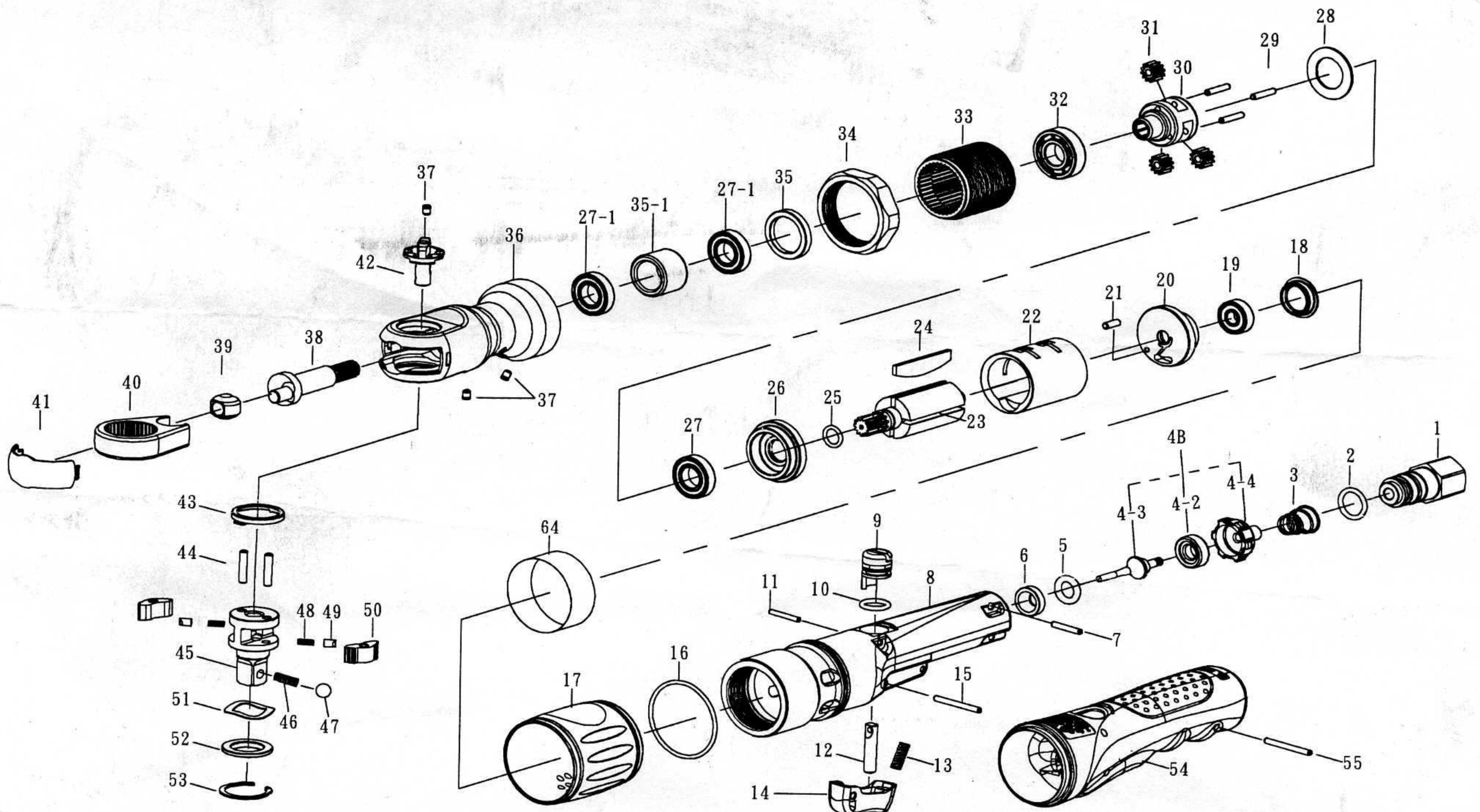


# TOPTUL®

## 1/2" Dr. Super Duty Air Ratchet Wrench



### KAAF1610

Index No.	Parts No.	Description	Q'TY	Index No.	Parts No.	Description	Q'TY
1	KAEV0010	Air Inlet	1	28	KAEV0280	Spacer	1
2	KAEV0020	O-Ring	1	29	KAEV0290	Pin	3
3	KAEV0030	Spring	1	30	KAEV0300	Work Spindle	1
4B	KAEV004B	Throttle Valve Assembly ( incl.4-2.4-3.4-4 )	1	31	KAEV0310	Planet Gear	3
4-2	KAEV0042	Throttle Valve Rubber	1	32	KAEV0320	Ball Bearing	1
4-3	KAEV0043	Throttle Valve Pin	1	33	KAEV0330	Ring Gear	1
4-4	KAEV0044	Throttle Valve	1	34	KAEV0340	Coupling Nut	1
5	KAEV0050	O-Ring	1	35	KAEV0350	Spacer	1
6	KAEV0060	Throttle Valve Seat	1	35-1	KAEV0351	Bushing	1
7	KAEV0070	Spring Pin	1	36	KAEV0360	Ratchet Housing Assembly { incl.37( 2 ) }	1
8	KAEV0080	Motor Housing	1	37	KAEV0370	Grease Fitting	3
9	KAEV0090	Air Regulator	1	38	KAEV0380	Crank Shaft	1
10	KAEV0100	O-Ring	1	39	KAEV0390	Drive Bushing	1
11	KAEV0110	Spring Pin	1	40	KAEV0400	Ratchet Yoke	1
12	KAEV0120	Throttle Valve Plunger	1	41	KAEV0410	Ratchet Housing Cover	1
13	KAEV0130	Spring	1	42	KAEV0420	Reverse Knob Assembly ( incl.37 )	1
14	KAEV0140	Trigger	1	43	KAEV0430	Thrust Washer	1
15	KAEV0150	Spring Pin	1	44	KAEV0440	Pin	2
16	KAEV0160	O-Ring	1	45	KAEV0450	Ratchet Anvil Assembly ( incl.46.47 )	1
17	KAEV0170	Exhaust Deflector	1	46	KAEV0460	Ball Spring	1
18	KAEV0180	End Cap	1	47	KAEV0470	Steel Ball	1
19	KAEV0190	Ball Bearing	1	48	KAEV0480	Ratchet Spring	2
20	KAEV0200	Rear End Plate	1	49	KAEV0490	Ratchet Lock Pin	2
21	KAEV0210	Spring Pin	1	50	KAEV0500	Ratchet Pawl	2
22	KAEV0220	Cylinder	1	51	KAEV0510	Wave Washer	1
23	KAEV0230	Rotor	1	52	KAEV0520	Thrust Washer	1
24	KAEV0240	Rotor Blade	4	53	KAEV0530	Retaining Ring	1
25	KAEV0250	O-Ring	1	54	KAEV0540	Rubber Grip	1
26	KAEV0260	Front End Plate	1	55	KAEV0550	Spring Pin	1
27	KAEV0270	Ball Bearing	1	64	KAEV0640	Muffler Element ( Option )	1
27-1	KAEV0271	Ball Bearing	2	TK	KAEV0010	Tune-Up Kit {2.3.5.10.13.16 }	