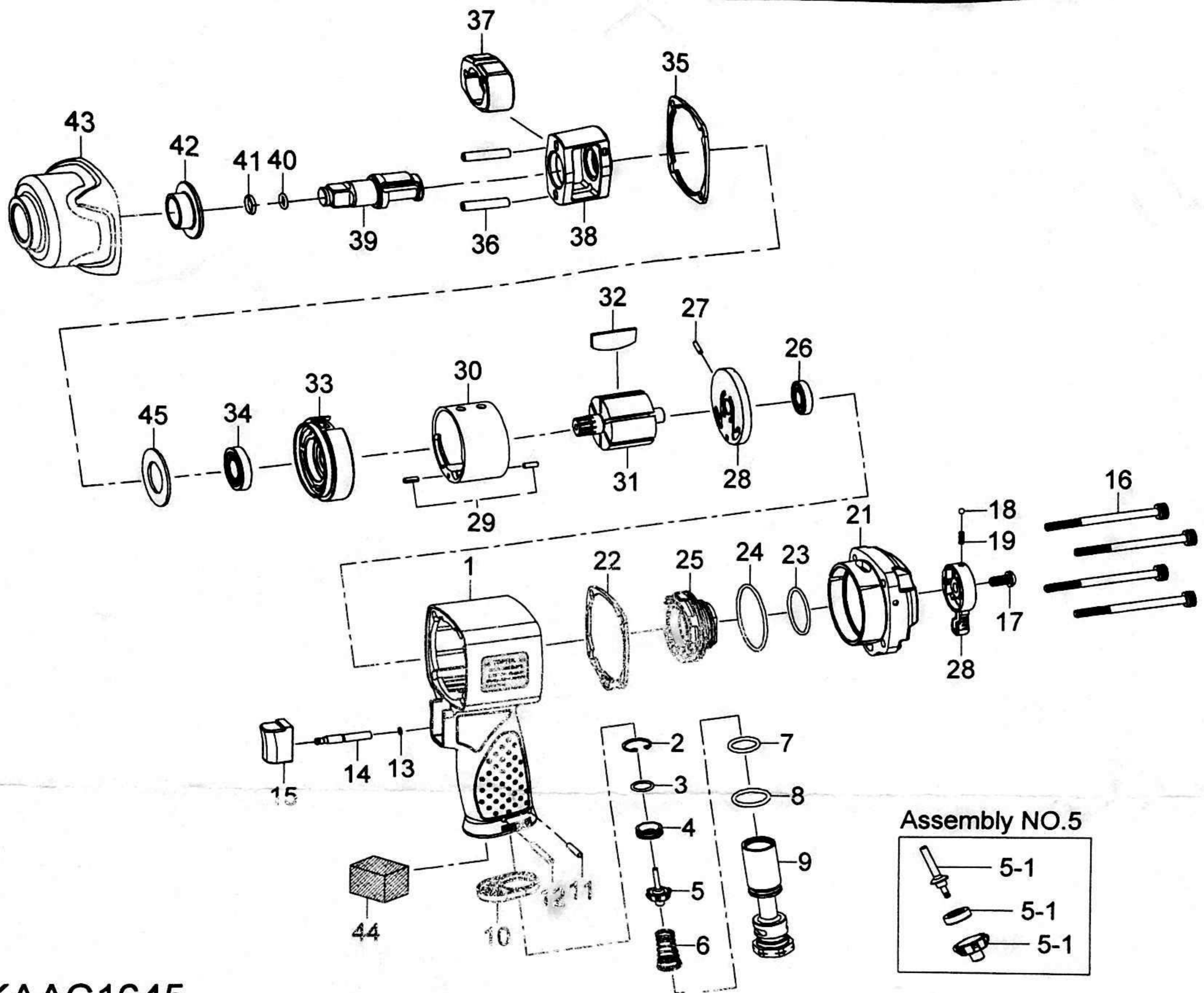


# TOPTUL®

## 1/2" Dr. Super Duty Air Impact Wrench



### KAAC1645

Index No.	Parts No.	Description	Q'TY	Index No.	Parts No.	Description	Q'TY
1	KAEW0010	Motor Housing	1	23	KAEW0230	O-Ring	1
2	KAEW0020	Retainer	1	24	KAEW0240	O-Ring	1
3	KAEW0030	O-Ring	1	25	KAEW0250	Reverse Valve	1
4	KAEW0040	Throttle Valve Seat	1	26	KAEW0260	Ball Bearing	1
5	KAEW0050	Throttle Valve Assembly ( incl.5-1.5-2.5-3 )	1	27	KAEW0270	Spring Pin	1
5-1	KAEW0051	Throttle Valve Pin	1	28	KAEW0280	Rear End Plate	1
5-2	KAEW0052	Rubber Seal	1	29	KAEW0290	Spring Pin	2
5-3	KAEW0053	Throttle Valve	1	30	KAEW0300	Cylinder	1
6	KAEW0060	Spring	1	31	KAEW0310	Rotor	1
7	KAEW0070	O-Ring	1	32	KAEW0320	Rotor Blade	6
8	KAEW0080	O-Ring	1	33	KAEW0330	Front End Plate	1
9	KAEW0090	Air Inlet	1	34	KAEW0340	Ball Bearing	1
10	KAEW0100	Exhaust Deflector	1	35	KAEW0350	Gasket	1
11	KAEW0110	Spring Pin	1	36	KAEW0360	Hammer Pin	1
12	KAEW0120	Spring Pin	1	37	KAEW0370	Hammer	2
13	KAEW0130	O-Ring	1	38	KAEW0380	Hammer Frame	1
14	KAEW0140	Trigger Pin	1	39	KAEW0390	Standard Anvil	1
15	KAEW0150	Trigger Assembly ( incl.14 )	1	40	KAEW0400	O-Ring	1
16	KAEW0160	Screw	4	41	KAEW0410	Socket Retainer	1
17	KAEW0170	Screw	1	42	KAEW0420	Bushing	1
18	KAEW0180	Steel Ball	1	43	KAEW0430	Hammer Case Assembly ( incl.42 )	1
19	KAEW0190	Spring	1	44	KAEW0440	Muffler Element	1
20	KAEW0200	Reverse Valve Knob	1	45	KAEW0450	Washer	1
21	KAEW0210	Backhead	1				
22	KAEW0220	Gasket	1	TK		Tune-Up Kit (3.6.7.8.11.12.18.19.22.23.24.26.32(6).34.35.40.41.44	1