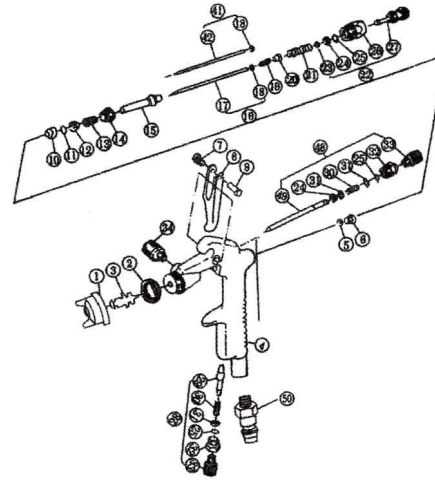


MINI SPRAY GUN

Operating Instruction



PARTS LIST

1	Air Cap	14	Valve Seat
2	Cap Lock Nut	15	Air Vaive
3	Fluid Nozzle	16	Needle Valve Ass'y
4	Body	19	Needle Spring
5	Needle Packing	20	Needle Spring Stop
6	Needle Packing Screw	21	Valve Spring
7	Trigger, Bearing Screw	22	Fluid Adjusting Screw Ass'y
8	Trigger	28	Air Adjusting Valve Ass'y
9	Trigger Bearing Stud	34	Nipple(1/4xM8)
11	"O" Ring(P.4 Teflon)	48	Fudutiaojiezujian
12	Valve Packing Push	50	Kuansu jinqi jietou
13	Packing Push Spring		



K-3 K-3B F-3 M-3 R-2

1.How to use

- (1) Paint Cup and Air Hose must be fixed on Spray Gun tight with the spanner attached.
- (2) 2kgf/cm² will be the most adequate spraying air pressure though it may vary depending on viscosity, nature and work condition of paint.
- (3) 10 to 15 cm will be the most proper distance for spray work. Fine paint finish cannot be expected if sprayed either too close, too far or being swung circularly.
- (4) Air eliminates dust sprayed article by pulling trigger when Fluid Adjusting Screw is fully tightened clockwise.
- (5) Air Cap should be placed with top of Fluid Nozzle extruded about 0.1-0.2mm ahead from front face of the Air Cap and fixed tight with attached Cap Lock Nut.
- (6) Volume of air is adjusted by Air Adjusting Screw. In case of turning fully it clockwise, no air comes out and air increases in case of turning it anti-clockwise. Volume of fluid is adjusted by Fluid Adjusting Screw likewise.

2.Maintenance

- (1) Soak the whole Gun Body into clean solvent and clean it well. Clean solvent must be used for dust not to enter the air passage and make trouble.
- (2) First, disassemble Air Cap and Fluid Nozzle, Soak them in solvent and then wash them with a brush or the like, Care must be taken not to hurt Fluid Nozzle and it should be disassembled with a spanner on the second hexagon portion from front side.
- (3) Cleaning of paint passage must be done in a manner to spray a little amount of solvent as if the gun is used for actual spray work.
- (4) Fasten the Needle Packing Screw by pulling the Trigger and adjusting the screw so as not to fasten it too tight.
- (5) Care must be taken absolutely not hurt each hole of Air Cap and the center hole of Fluid Nozzle.