

DO NOT EXCEED RATED LOAD CAPACITY

CHECK RAM AND PLUNGER EVERY 3 MONTHS FOR ANY SIGNS OF RUST OR CORROSION CLEAN AS NEEDED AND WIPE WITH A CLEAN OIL CLOTH

WHEN NOT USING, HOIST ALWAYS LEAVE RAM IN DOWN MOST POSITION

WHEN ADDING OR REPLACING OIL, ALWAYS USE A GOOD GRADE OF HYDRAULIC JACK OIL.

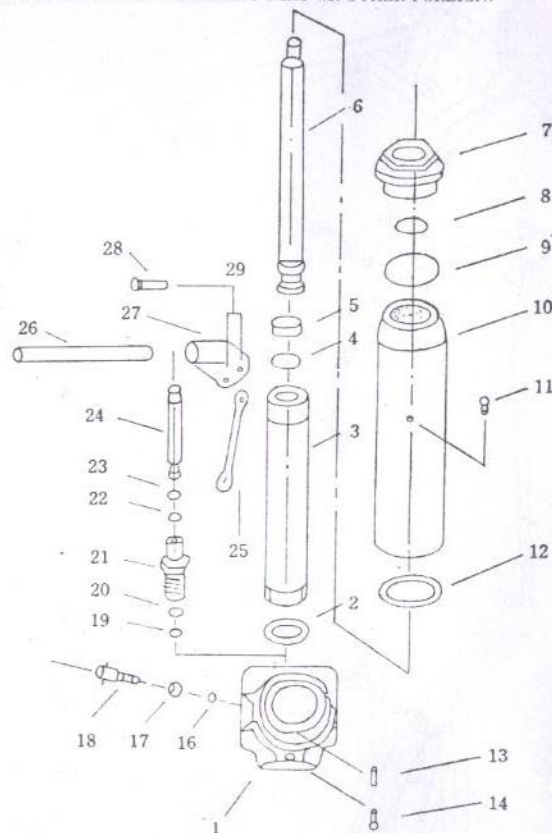
AVOID MIXING TYPES OF OIL.

DO NOT USE BRAKE FLUID, ALCOHOL, GLYCERIN, DETERGENT, MOTOR OIL OR DIRTY OIL.

WHEN ADDING OIL, MUST BE VERY CAREFUL NOT TO PERMIT DIRT OR OTHER FOREIGN.

MATTER TO GET INTO SYSTEM

- | | | |
|----|------------------|---|
| 1 | Valve Block | 1 |
| 2 | Copper Washer* | 1 |
| 3 | Cylinder | 1 |
| 4 | O-Ring* | 1 |
| 5 | O-Ring Retainer* | 1 |
| 6 | Ram | 1 |
| 7 | Top Nut | 1 |
| 8 | O-Ring* | 1 |
| 9 | Sealing Gasket* | 1 |
| 10 | Oil Tank | 1 |
| 11 | Oil Plug* | 1 |
| 12 | Seal Ring | 1 |
| 13 | Tube* | 1 |
| 14 | Bolt | 1 |
| 15 | Screw | 2 |
| 16 | Ball | 1 |
| 17 | Seal Ring* | 1 |
| 18 | Release spindle | 1 |
| 19 | Ball | 1 |
| 20 | Copper Washer* | 1 |
| 21 | Pump Cylinder | 1 |
| 22 | O-Ring* | 1 |
| 23 | Back up Ring* | 1 |
| 24 | Plunger | 1 |
| 25 | Pump Link | 1 |
| 26 | Handle | 1 |
| 27 | Handle Socket | 1 |
| 28 | Shaft | 2 |
| 29 | Cotter Pin | 2 |



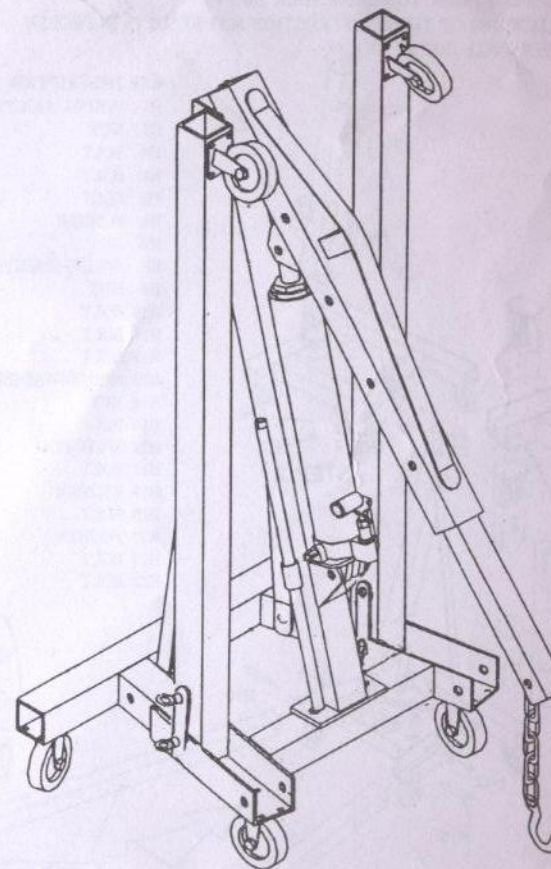
MAINTENANCE PROCEDURES

IMPORTANT When adding or replacing oil, always use a good grade hydraulic jack oil. Avoid mixing types of oil. DO NOT USE Brake Fluid, Alcohol, Glycerine, detergent motor oil or dirty oil. Improper fluid can cause serious internal damage to Long Ram. When adding oil, be VERY CAREFUL not to permit dirt or any foreign matter to get into the system. Check Ram and Plunger regularly for any rust or corrosion. When not using long ram, always leave saddle all the way down.

FOLDING HYDRAULIC SHOP CRANE

ASSEMBLY INSTRUCTION

MODEL T32002

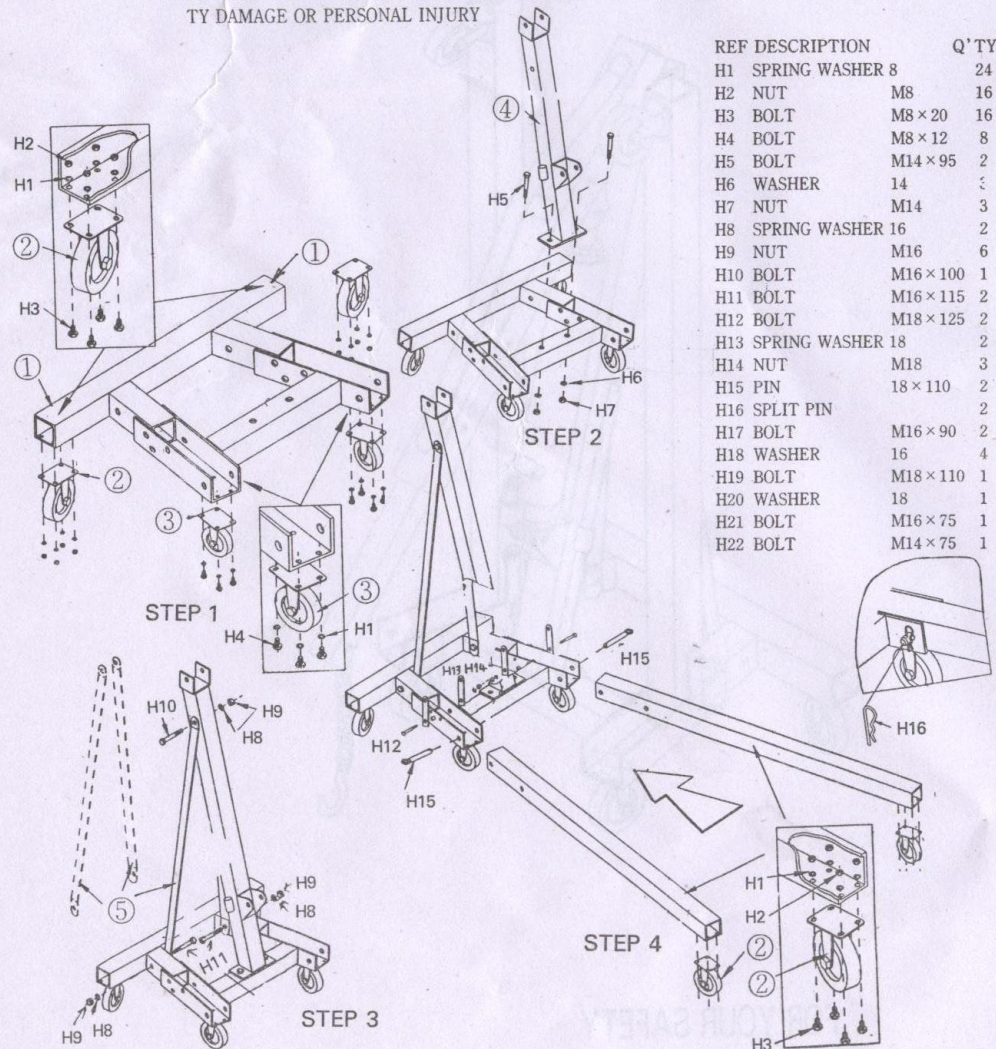


FOR YOUR SAFETY

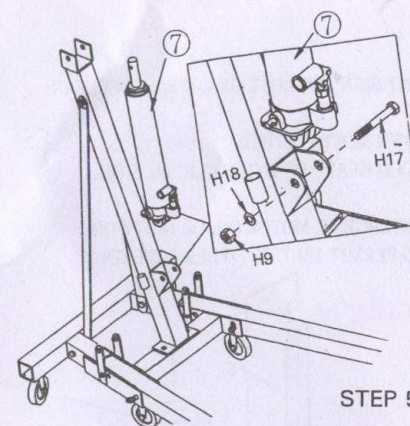
please read these instructions carefully and retain them for future use

WARNING

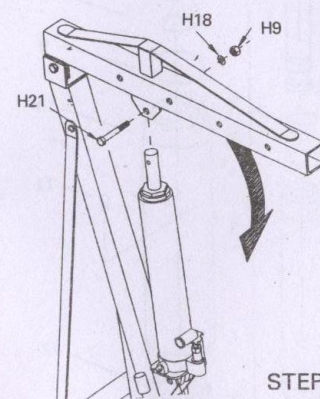
- DO NOT EXCEED RATED LOAD CAPACITY SPECIFIED FOR EACH BOOM POSITION
- ⊙ WORK ON FLAT & LEVEL SURFACE ONLY
- ⊙ NEVER ATTEMPT TO MOVE LOADED HOIST ACROSS FLOOR HAVING CRACKS OR OTHER OBSTACLES WHICH MIGHT IMPEDE MOVEMENT OF WHEELS
- ⊙ NEVER WORK DIRECTLY UNDER A SUPPORTED ENGINE
- ⊙ DO NOT LOAD BEYOND RATED CAPACITY
- ⊙ BE SURE LOAD AND HOIST ARE STABLE
- ⊙ PERIODICALLY INSPECT HOIST TO INSURE YOUR SAFETY
- ⊙ FAILURE TO FOLLOW ANY OF THESE INSTRUCTION MAY RESULTS IN PROPER-TY DAMAGE OR PERSONAL INJURY



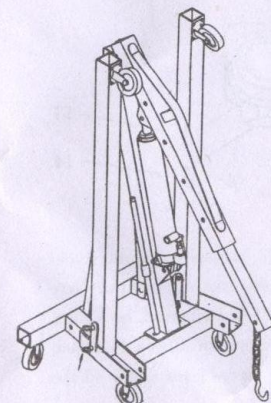
REF	DESCRIPTION	Q'TY
H1	SPRING WASHER 8	24
H2	NUT M8	16
H3	BOLT M8×20	16
H4	BOLT M8×12	8
H5	BOLT M14×95	2
H6	WASHER 14	3
H7	NUT M14	3
H8	SPRING WASHER 16	2
H9	NUT M16	6
H10	BOLT M16×100	1
H11	BOLT M16×115	2
H12	BOLT M18×125	2
H13	SPRING WASHER 18	2
H14	NUT M18	3
H15	PIN 18×110	2
H16	SPLIT PIN	2
H17	BOLT M16×90	2
H18	WASHER 16	4
H19	BOLT M18×110	1
H20	WASHER 18	1
H21	BOLT M16×75	1
H22	BOLT M14×75	1



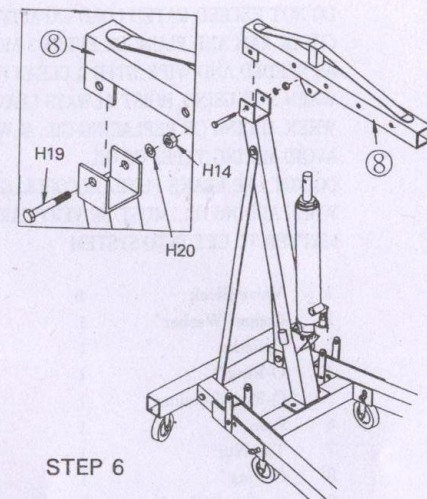
STEP 5



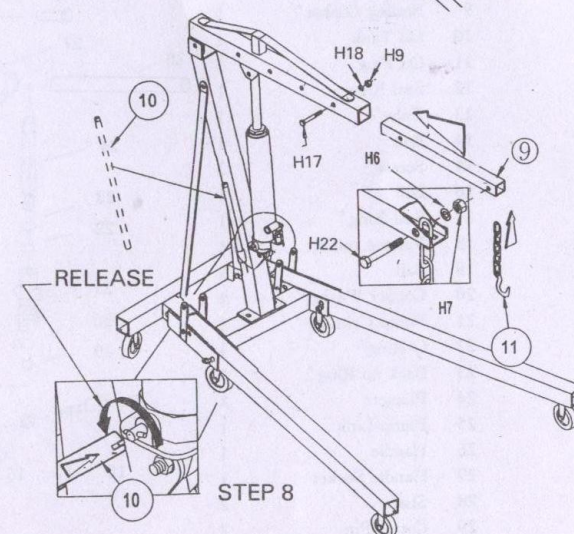
STEP 7



STEP 9



STEP 6



STEP 8

REF.	QTY.	DESCRIPTION
1	1	BASE
2	4	LARGE CASTER
3	2	SMALL CASTER
4	1	POST
5	2	SUPPORT
6	2	LEG
7	1	JACK
8	1	BOOM
9	1	EXTENSION
10	1	JACK HANDLE
11	1	CHAIN/HOOK

2 TON HYDRAULIC ENGINE HOIST

WARNING!

Failure to heed these warnings may result in loss of load, damage, to engine crane, and/or engine crane failure resulting in personal injury or property damage.

Do not overload engine crane beyond rated capacity of each specified boom position.

Overloading can cause damage to or failure of the crane.

Always use crane on hard, level surface capable of sustaining the load. Use of crane on other than hard level surfaces can result in crane instability and possible loss of load.

Boom and load must be in lowest possible position before moving: Move load slowly and smoothly to avoid uncontrolled swinging and possible loss of load.

Never work under load.