

# TOPTUL<sup>®</sup>

THE MARK OF PROFESSIONAL TOOLS



**Professional Grade Power Tools**

**Cordless Impact Wrench**

▶ Part No. KPAB1685

## Operational Manual



# TOPTUL<sup>®</sup>

THE MARK OF PROFESSIONAL TOOLS

TOPTUL TAIWAN

**Rotar Machinery Industrial Co., Ltd.**

No.189, Gongye Rd., Taiping Dist., Taichung City 41154

(Ta Li Ind. Park), Taiwan

Tel: +886-4-22715989 (Rep)

Fax: +886-4-22716979

E-mail: service@toptul.com

Website: www.toptul.com



KP-1685



**WARNING:** Read all safety warnings and all instructions. Failure to follow the warnings and instructions may result in electric shock, fire and / or serious injury. Save all warning and instructions for future reference.

## Safety Instructions

### ➤ Safe Work Area

1. Keep work area clean and well lit. Cluttered and dark areas invite accidents.
2. Do not operate power tools on explosive atmospheres, such as in the presence of flammable liquids, gases or dust. Power tools create sparks which may ignite the dust or fumes.
3. Keep children and bystanders away while operating a power tool. Distractions can cause you to lose control.

### ➤ Electric Safety

1. Power tool plugs must match the outlet. Never modify the plug in any way. Do not use any adapter plugs with earthed (grounded) power tools. Unmodified plugs and matching outlets will reduce risk of electric shock.
2. Avoid body contact with earthed or grounded surfaces such as pipes, radiators, ranged and refrigerators. There is an increased risk of electric shock if your body is earthed or grounded.
3. Do not expose power tools to rain or wet conditions. Water entering a power tool will increase the risk of electric shock.
4. Do not abuse the cord. Never use the cord for carrying, pulling or unplugging the power tool. Keep cord away from heat, oil, sharp edges or moving parts. Damaged or entangled cords increase the risk of electric shock.
5. When operating a power tool outdoors, use an extension cord suitable for outdoor use. Use of a cord suitable for outdoor could reduces the risk electric shock.

### ➤ Personal Safety

1. Stay alert, watch what you are doing and use common sense when operating a power tool. Do not use to a power tool while you are tired or under the influence of drugs, alcohol or medication. A moment of inattention while operating power tools may result in serious personal injury.
2. Use personal protective equipment. Always wear eye protection. Protective equipment such as dust mask, non-skid safety shoes, hard hat, or hearing protection used for appropriate conditions will reduce personal injuries.
3. Prevent unintentional starting. Ensure the switch is in the off position before connecting to power source and / or battery pack, picking up or carrying the tool. Carrying power tools with your finger on the switch or energizing power tools that have the switch on invites accidents.

4. Remove any adjusting key or wrench before turning the power tools on. A wrench or key left attached part of the power tool may result in personal injury.
5. Always when using the tool, adopt a firm footing and / or position and grip the tool sufficiently only to overcome any reaction forces that may result from the tool doing work. Do not over grip.
6. Be aware of entanglement of the moving parts of the tool with clothing, neckties, long hair, jewelry, watches and etc. This could cause the body or parts of the body to be drawn towards and in contact with the moving parts of the tool and may be very dangerous.
7. If devices are provided for the connection of dust extraction and collection facilities, ensure these are connected and properly used. Used of these devices can reduce dust-related hazards.

### ➤ Power Tool Use and Care

1. Do not force the power tool. Use the correct power tool for your application. The correct power tool will do the job better and safer at the rate for which it was designed.
2. Do not use the power tool if the switch does not turn it on and off. Any power tool that cannot be controlled with the switch is dangerous and must be repaired.
3. Disconnect the plug from the power source before marking and adjustments, changing accessories, or storing power tools. Such preventive safety measures reduce the risk of starting the power tools accidentally.
4. Store idle power tools out of the reach of children and do not allow persons unfamiliar with the power tool or these instructions to operate the power tool. Power tool are dangerous in the hands of untrained users.
5. Maintain power tools. Check for misalignment of moving parts, breakage of parts and any other condition that may affect the power tools operation. If damaged, have the power tool repaired before use. Many accidents are caused by poorly maintained power tools.
6. Keep cutting tools sharp and clean. Properly maintained cutting tools with sharp cutting edges are less likely to bind and are easier to control.
7. Use the power tool, accessories and tool bits etc., in accordance with these instructions and in the manner intended for the particular type of power tool, taking into account the working conditions and the work to be performed. Use of the power tool for operations different from intended could result in a hazardous situation.



### Service

Have your power tool serviced by a qualified repair person using only identical replacement parts. This will ensure that the safety of the power tool is maintained.

### Specific Warnings

Hold power tool by insulated gripping surfaces, when performing an operation where the fastener may contact hidden wiring or its own cord. Fasteners contacting a "live" wire make exposed metal parts of the power tool "live" and could give the operator an electric shock.

### Important Safety Instructions for Charger & Battery

- Before using the battery charger, read all instructions and cautionary markings on (1) Battery charger (2) Battery (3) Product using battery
- Recharge only with the charger specified by the manufacturer. A charger that is suitable for one type of battery pack may create a risk of fire when used with another battery pack.
- Use power tool only with specifically designated battery packs. Use of any other battery packs may create a risk of injury and fire.
- When battery pack is not in use, keep it away from other metal objects that can make a connection from one terminal to another. Shorting the battery terminals together may cause burns or a fire.
- Under abusive conditions, liquid may be ejected from the battery; avoid contact. If contact accidentally occurs, flush with water. If liquid contacts eyes, additionally seek medical help. Liquid ejected from the battery may cause irritation or burns.
- Do not disassemble battery charger; take it to a qualified service or repair. Incorrect reassembly may result in a risk of electric shock or fire.
- Use of an attachment not recommended or sold by the battery charger manufacturer may result in a risk of fire, electric shock, or injury to persons.
- To reduce risk of electric shock, unplug charger from receptacle before attempting any maintenance or cleaning. Removing the battery will not reduce this risk.
- A small leakage of liquid from the battery pack may occur under extreme usage or temperature. This does not necessarily indicate a failure of the battery pack.

**However, if the outer seal is broken and this leakage comes into contact with your skin:**

- Wash the affected area quickly with soap and water.
- Neutralize the liquid with a mild acid such as lemon juice or vinegar.

### If the leakage gets in your eyes:

- Flush your eyes with clean water for a minimum of 10 minutes and seek immediate medical attention. Inform the medical staff that the liquid is a 25 - 35% solution of potassium hydroxide.
- Do not store or carry a spare battery pack in a pocket or toolbox or any other place where it may come into contact with metal objects. The battery pack may be short circuited causing damage to the battery pack, burns or a fire. If storing or disposing the battery pack, cover the terminals with a heavy insulation tape to ensure short circuit cannot occur. Batteries, when stored for a long period of time, will discharge.
  - DANGER:** If the battery pack is cracked or damaged in any other way, do not insert it in the charging base. There is a danger of electric shock or electrocution.
  - WARNING:** Do not allow any liquid to come into contact with the charger. There is a danger of electric shock.
  - Do not place any object on the top of the charger as it could cause overheating. Do not place the charger near any heat source.
  - Pull on the charger to disconnection it from the power source. Do not pull on the lead.
  - Never recharge a fully charged battery. Overcharging shortens the battery service life.
  - Make sure that the charger lead is positioned where it will not be stepped on, tripped over or otherwise subjected to damage or stress.
  - Do not use an extension cord unless it is absolutely necessary. The use of an improper extension cord could cause the risk of fire, electric shock or electrocution.
  - Do not use the charger if it has been subjected to a heavy knock, dropped or otherwise damaged in any way. Take the charger to an authorized service centre for a check or repair.
  - Do not charge at voltage higher than indicated as charger specification; otherwise, the charger will burn up.
  - Do not disassembly the charger. Take it to an authorized service centre when service or repair is required. Incorrect reassembly may result in the result in the risk of fire, electrocution.
  - To reduce the risk of an electric shock, unplug the charger from the power supply before attempting to clean it. Removing the battery pack alone does not reduce the risk.



### 23. Suitable charging environment:

- Charging temperature: 0°C ~ 40°C (32°F ~ 104°F)
- Discharging temperature: 0°C ~ 40°C (32°F ~ 104°F)
- Storage temperature: -20°C ~ 60°C (-4°F ~ 140°F)

Please wait one hour first before charging, if the battery pack is stored under 0°C (32°F).

### 24. Storage instructions of battery:

- If battery pack is at a low temperature (under -20°C / -4°F) its chemical elements will be in solid state and resistance in charging will become too high for the battery to be charged.
- If battery pack is at a high temperature (above 60°C / 140°F), its chemical elements will be in a vapor state that can make the battery ineffective in a short time.

### 25. The lithium battery safe protection function:

- The "low-voltage protect function" will start when the lithium battery is consumption. Please charge the lithium battery to prevent battery from damage.
- After using, the temperature of the lithium battery will keep rising. When the temperature of the lithium battery exceeds can allow the scope of application, battery "temperature protects function" will start. The lithium battery will be prevent overheated dangerous, please wait till the lithium battery cool down.
- When the battery is working over load or block working, the machine will have greatly current. The lithium battery pack will start "electric current overload protection function" to protect the lithium battery and battery P.C board. In this situation, the machine will stop few seconds till protecting function relieve automatically. If the machine could not use after few minutes, the lithium battery might be in "low-voltage protecting function" or "temperature protecting function". Please follow above mentioned ways to relieve.

## Additional Safety Warnings of Tool & Charger

1. This appliance is not intended for use by persons (including children) with reduced physical, sensory or mental capabilities, or lack of experience and knowledge, unless they have been given supervision or instruction concerning use of the appliance by a person responsible for their safety.
2. Children should be supervised to ensure that they do not play with the appliance.
3. If the supply cord is damaged, it must be replaced by the manufacturer, its service agent or similarly qualified persons in order to avoid a hazard.

## Charger Indicator & Battery Installation

### ► The Indicators of the Charger

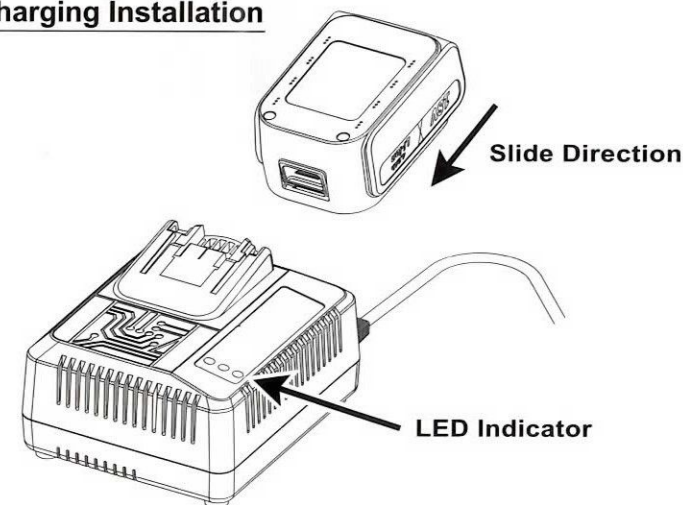
RED		Power On	The charger is power on
YELLOW		Battery at High Temperature	The battery pack is overheated. Please wait until the battery pack cools down, or take it out from the charger temporarily to be cooled off
		Battery at Low Temperature	The battery packs temperature is too low. Please wait until the packs temperature rises to 0°C (32°F)
		Incorrect Battery Type or Battery NG	The battery pack is unspecified or is failed. Please replace the battery pack with a new one
GREEN		Fast Charging	The battery is under quick charging
		Fully Charging	The charging is completed. Please take the battery pack out from the charger, and then unplug the charger from the power supply outlet

### WARNING:

If any of the following occurs, unplug the charger from the power supply outlet and replace the battery pack

- None of the indicators lights on illuminate at all.
- The yellow indicator light glitters constantly.
- Only the red indicator light is on even if the battery pack.

### Battery Pack Charging Installation





### Content



No.	Description	Q'ty
A	Cordless Impact Wrench	1
B	Li-ion Battery	2
C	Auxiliary Handle	1
D	Charger	1
E	Impact Socket - 17mm	1
F	Impact Socket - 19mm	1
G	Impact Socket - 21mm	1

### CAUTION:

Always use authorized replacement parts and accessories. Never use replacement parts or accessories which are not intended for use with tool. The use of any other attachment or accessory can be dangerous and could cause injury or mechanical damage.

### Explanation of General View



### Specification

#### 18V Cordless Impact Wrench

Max. For. Torque	2655 in-lb / 300 Nm (5 seconds)
	4425 in-lb / 500 Nm (10 seconds)
Max. Rev. Torque	7523 in-lb / 850 Nm
Free Speed	0 - 2200 RPM
Overall Length	9-5/8" / 245mm
Net Weight	5.83 lbs / 2.65 kgs (with battery)

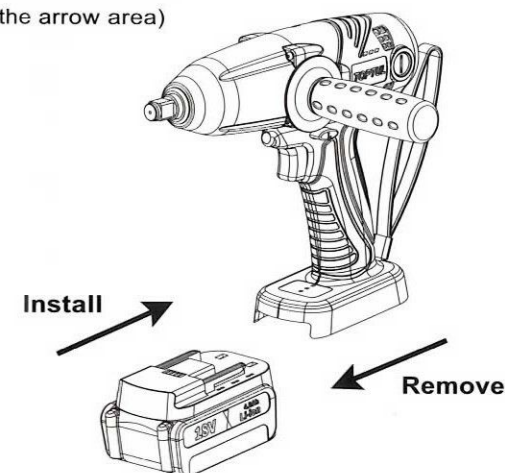
#### Charger & Battery Pack

	US-EU-UK-AU/NZ	JP
Charger Power Supply	AC 100-240V 50/60 Hz	
Charger Power Consumption	DC 21V 3.0A	DC 21V 2.3A
Charging Time	1 Hour	1.5 Hour
Battery Voltage	18V	
Capacity Cell Type	4.0 Ah Li-ion	3.0 Ah Li-ion

### Operating Instructions

#### Step 1: Battery Pack Installation

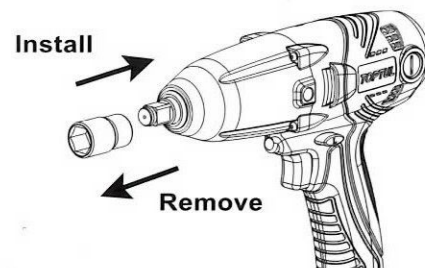
- Slide in battery pack.
- Double check battery pack was well installed, heard "click" sound and there no gap (see the arrow area) between the tool and pack housing.



**Step 2: Installing or Removing Socket**

Make sure it will not come off if the socket is lightly pulled.

Push forward the socket chuck on one side.


**IMPORTANT:**

Always use the correct size socket for bolts and nuts.

An incorrect size socket will result in inaccurate and inconsistent fastening torque and / or damage to the bolt or nut.

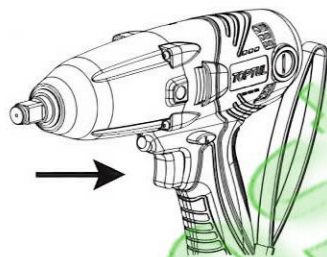
**Step 3: Switch Action and Lighting up the LED Light**

1. When the switch is depressed, the tool rotates.

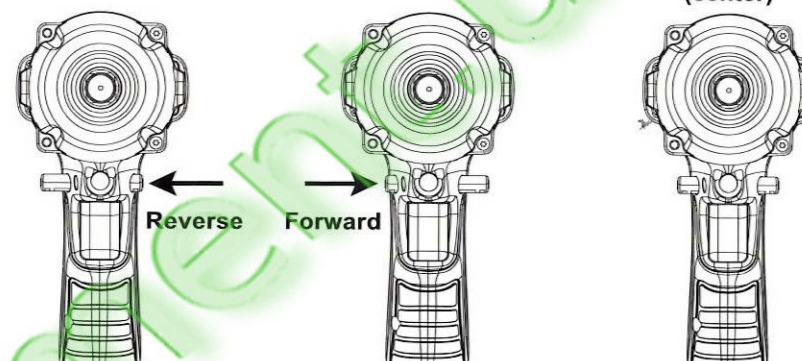
When the switch is released, the tool stops.

2. The rotational speed can be controlled by varying the amount that the switch is pressed. Speed is low when the switch is pressed slightly and increases as the switch is pressed more.

3. The LED will light when you depress the switch.


**IMPORTANT:**

- Do not look into the LED light source directly.
- Use a dry cloth to wipe dirt off the lens of LED light. Be careful not to scratch the lens of LED light, or it may lower the illumination.

**Step 4: Forward / Reverse Switch Lever**


1. This tool has a forwarding / reversing switch lever to change the direction of rotation. Depress the reversing switch lever "R" for clockwise rotation or "L" for counterclockwise rotation.

2. To lock the switch, press the forwarding / reversing switch lever in the neutral position.

**IMPORTANT:**

- Always check the direction of rotation before operation.
- Use the forwarding / reversing switch lever only after the tool comes to a complete stop. Changing the direction of rotation before the tool stops may damage the tool.
- When not operating the tool, always set the forwarding / reversing switch lever to the neutral position.

**Step 5: Installing and Removing the Handle**

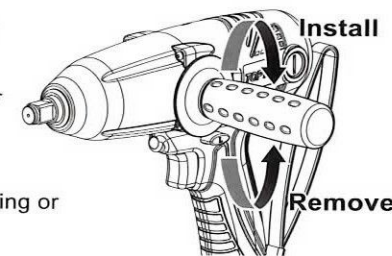
The auxiliary handle could be set in the right or left side of front cover according to user's demand.

**Installing:** Screwing the handle to the front cover clockwise direction.

**Removing:** Losing the handle from the front cover anti-clockwise direction.

**IMPORTANT:**

Make sure the tool is stopping rotate before installing or removing the handle.





## Maintenance

### CAUTION:

Always be sure that the tool is triggered off and the battery is removed before attempting to perform inspection or maintenance.

#### 1. Inspecting the Carbon Brushes

Remove and check the carbon brush regularly. Replaced when they wear down to then keep the carbon brushes clean and free to slip in the holders. Both carbon brushes should same time. Use only identical carbon brushes.



#### 2. Replacing Carbon Brush

Use a screwdriver to remove the brush holder caps. Take out the worn carbon brushes, insert the new ones and secure the brush holder caps.



Fig.1



Fig.2



Fig.3



Fig.4

#### 3. Inspecting the Tool Screws

To make sure all of threads are fasten with correct way and tight after disassembly or maintained the tool.

#### 4. Maintenance of Tool

Please clean up the tool regularly with dry wiper. Do not use oil, thinner, water, or other corrosiveness liquid, it may damage the tool.

### IMPORTANT:

Disconnect the plug from the power source and turn off the switch before clean the tool.

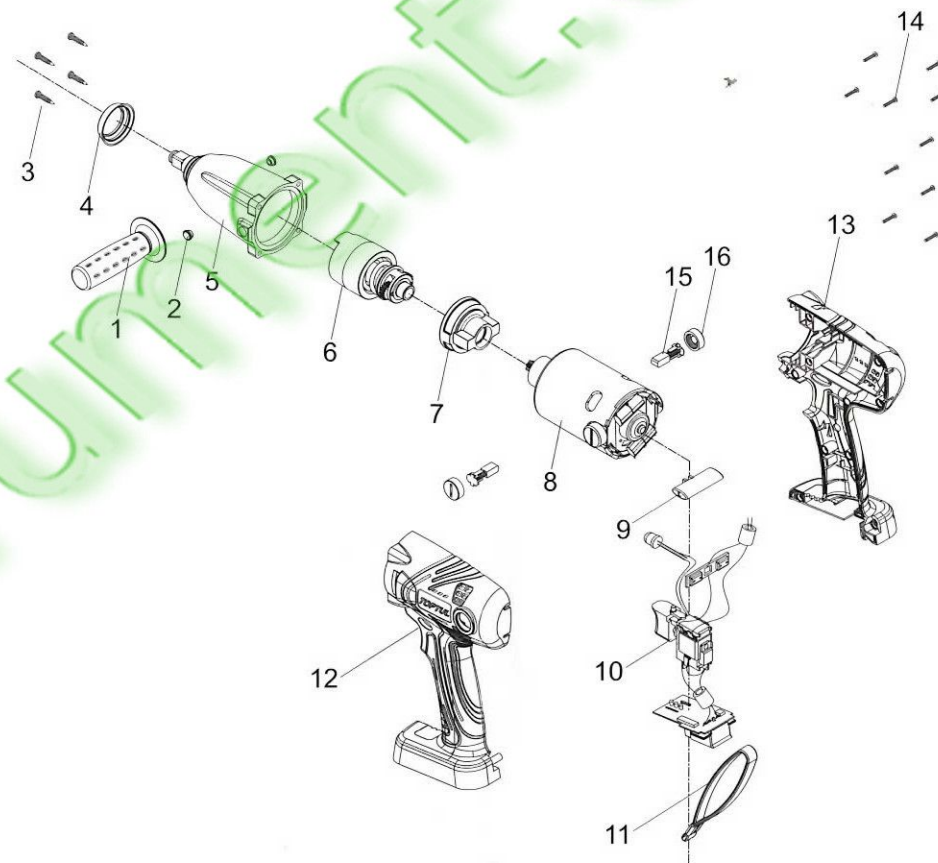
#### 5. Storage

Store idle power tools out of the reach of children and humidity area.

#### 6. Repair

Please contact with the store if cannot solve the problems.

## 1/2" DR. Cordless Impact Wrench



### ITEM NO. KPAB1685

Index No.	Parts No.	Description	Q'TY	Index No.	Parts No.	Description	Q'TY
1	KAPB0010	Handle Grip	1	9	KAPB0090	Forward / Reverse Lever	1
2	KAPB0020	Screw Plugger	2	10	KAPB0100	Trigger	1
3	KAPB0030	Torx Screw	4	11	KAPA0130	Strap	1
4	KAPA0020	Protection Cover	1	12	KAPB0120	Housing (Bottom)	1
5	KAPB0050	Front Cover Output Shaft Group	1	13	KAPB0130	Housing (Top)	1
6	KAPB0060	Shaft Group	1	14	KAPB0140	Torx Screw	10
7	KAPB0070	Gear Box	1	15	KAPB0150	Carbon Brush	2
8	KAPB0080	Motor Group	1	16	KAPB0160	Carbon Cap	2

● Recommended not be replaced and reinstalled individually due to assembly difficulty

2015.12

# EC DECLARATION OF CONFORMITY

WE HEREBY CERTIFY THAT:  
Cordless Impact Wrench  
KPAB1685



AND KEEPS ALL REQUIREMENTS ACCORDING THE FOLLOWING REGULATIONS

Test Standards:

Electromagnetic Compatibility (EMC) Directive 2004/108/EC

IS IN COMPLIANCE TO THE EUROPEAN COUNCIL DIRECTIVE 2004/108/EC  
WITHIN CE MARKING REQUIREMENT.

1/2" Square Drive  
ITEM NO. KPAB1685



ROTAR MACHINERY INDUSTRIAL CO., LTD.  
No.189, Gongye Rd., Taiping Dist., Taichung City 41154  
(Ta Li Ind. Park), Taiwan  
Tel: +886-4-22715989 (Rep) Fax: +886-4-22716979  
E-Mail: service@toptul.com

Lawrence  
Q.C. DIRECTOR

